



Geo. M. Martin Company



SELECT® LCS SERIES ROTARY DIE-CUT STACKER

OUTSTANDING VERSATILITY
STATE-OF-THE-ART TECHNOLOGY
UNCHALLENGED PERFORMANCE

UNMATCHED QUALITY & SERVICE SINCE 1929



Since our inception, the Geo. M. Martin Company has provided our customers with high quality, high performance machinery that sets industry standards for safety, quality, durability, reliability, versatility, and top production.

We know that customers depend on our machines to keep their production lines up and running. In addition to quality machinery this requires prompt, professional, knowledgeable service and support when and where they need them.

We offer:

- Regionally located Field-based Engineers for immediate, knowledgeable, cost-effective assistance
- Learning-Focused Training Programs featuring classroom, offline and practical hands-on instruction
- Field-experienced Technical Support Specialists for rapid solutions to customer issues
- Quik-Ship replacement parts. Over 99% of Genuine Martin Replacement Parts can be shipped within 8 hours of receiving the order

A Single Source Supplier Tying it All Together

Faster Installation – True single source component integration, One call for Parts, Service, Training and Support – Full System Responsibility

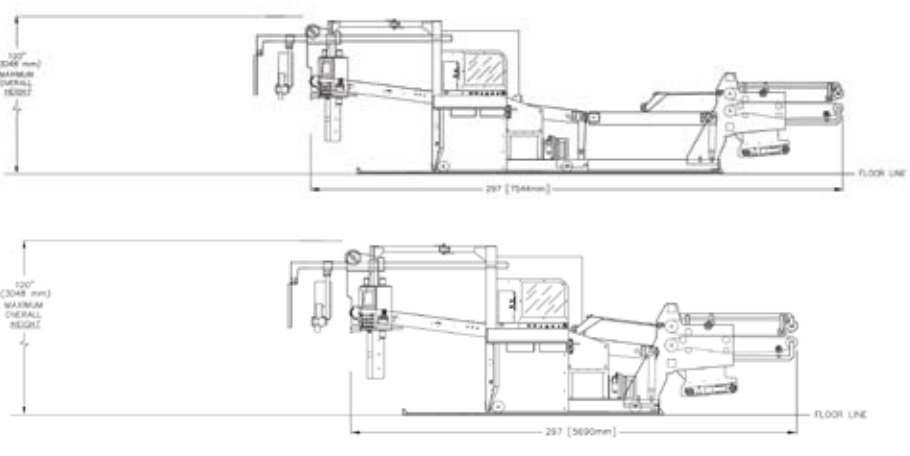
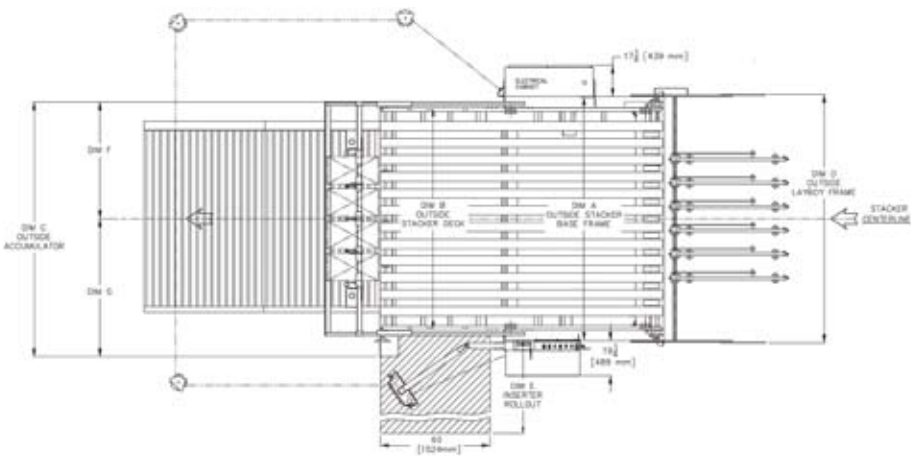
Geo. M. Martin Company has long been known as the leading supplier of world-class stackers for the corrugated industry. More recently, our product lines have expanded to include a full range of bundle line and stacking equipment as well as unique specialty conveyor components and state-of-the-art controls to tie it all together. Our dedicated R&D efforts continue to develop products to help converters cost-effectively maximize their productivity and profitability and offer converters single source convenience and responsibility.

Our bundle lines consist of a diverse range of specialty and unique equipment that not only meets, but exceeds your requirements and expectations. A complete solution from a single OEM also assures proper and efficient integration and the ability to “fine-tune” various components for maximum productivity, as well as easy system retrofits of future upgrades.



Geo. M. Martin Company

THE SELECT LCS SERIES ROTARY DIE-CUT STACKER



Stacker Size	A	B	C	D	E	F	G
90"	108 1/4" (2750 mm)	96" (2438 mm)	135 1/2" (3442 mm)	148 1/2" (3772 mm)	59" (1499 mm)	72 1/2" (1842 mm)	63" (1600 mm)
100"	118 1/4" (3004 mm)	106" (2692 mm)	145 1/2" (3696 mm)	158 1/2" (4026 mm)	69" (1753 mm)	77 1/2" (1969 mm)	68" (1727 mm)
115"	133 1/4" (3385 mm)	121" (3073 mm)	160 1/2" (4076 mm)	173 1/2" (4407 mm)	84" (2134 mm)	85" (2159 mm)	75 1/2" (1917 mm)
130"	148 1/4" (3766 mm)	136" (3454 mm)	175 1/2" (4458 mm)	188 1/2" (4788 mm)	94" (2388 mm)	92 1/2" (2350 mm)	83" (2108 mm)

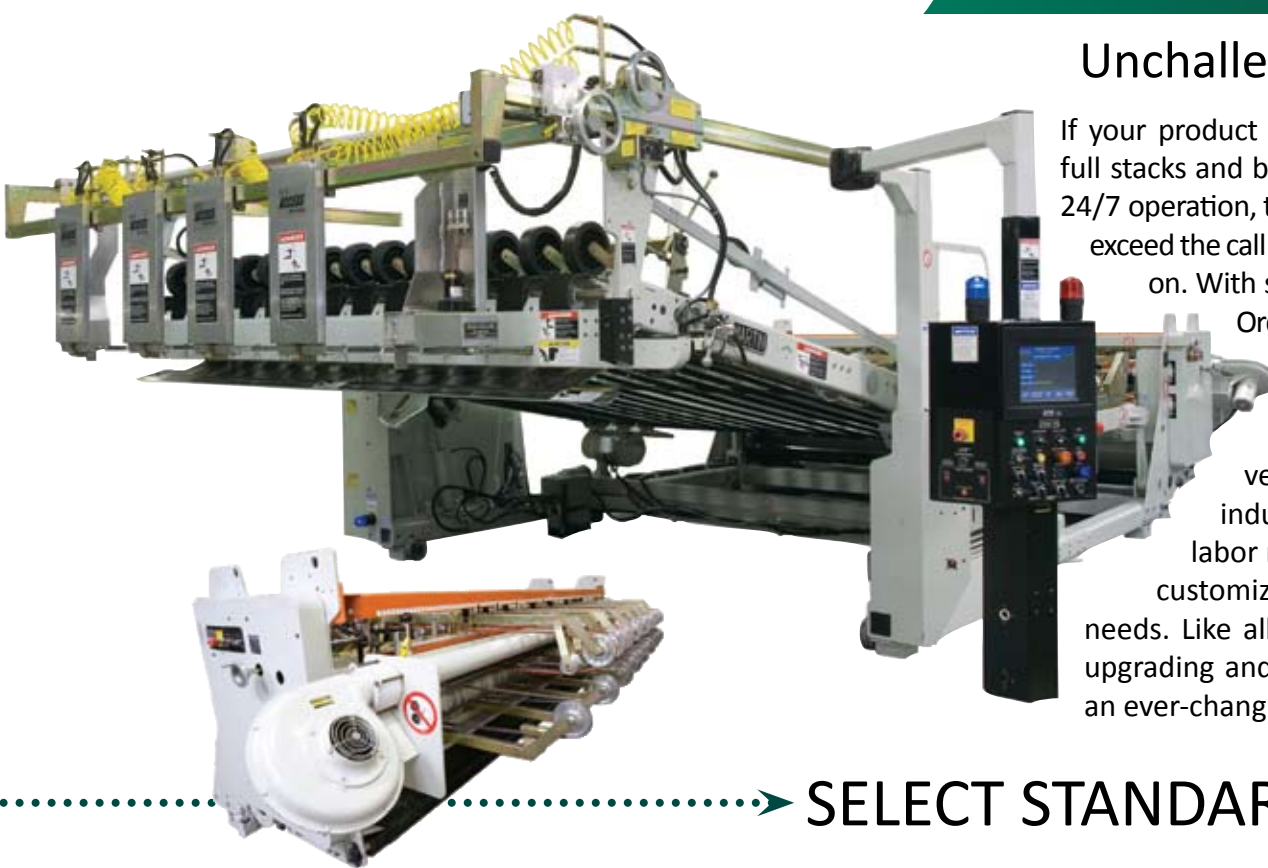
Geo. M. Martin is your single source supplier for all your stacker and bundle line needs. Die-cut, Press, and Specialty stackers Separators, Load formers Specialty Bundle Rotators, Inverters, Doublers, Squaring Systems Stack Inverters, and Pallet Dispensers



Geo. M. Martin Company
1250 67th Street
Emeryville, California 94608
510.652.2200
fax 510.652.6447
www.geomartin.com

Select, Inserter, LCS, Pozi-Stack, Pozi-Level, ZFI, Fas-Set, Smart-Stak, and the Martin logo are either trademarks or registered trademarks of the Geo. M. Martin Company in the United States and/or other countries. Items in this publication may be covered under one or more patents in the United States and/or other countries. Geo. M. Martin retains the right to change any, or all, specifications without notice. This publication is for the sole purpose of product promotion and is not intended, nor is to be considered, a contractual document.

THE SELECT® LCS ROTARY DIE-CUT STACKER



Unchallenged Versatility and Performance

If your product mix calls for multi-ups and outs, high quality graphics, full stacks and bundles, quick setups, short runs or just hard performing 24/7 operation, the Martin Select-LCS Rotary Die-Cut Stacker will meet and exceed the call to perform. The Select isn't the state-of-the-art 'Smart-Stak' Order Entry System, EZ-Set Layboy Section, proportional hydraulics, Pozi-Level, Pozi-Stack II front end system with Access Style Backstop, EZ-Adjust Cross Rail, and LCS safety system, the Select combines safety, versatility, durability and high performance to be the industry's leader in rotary die-cut stackers. A full list of quality, labor reducing, productivity enhancing options, allows you to customize the Select to exactly meet your specific production needs. Like all Martin stackers, the Select is designed for easy field upgrading and conversion to keep your company at the forefront of an ever-changing market.

SELECT STANDARD EQUIPMENT INCLUDES

- Single and Multi-Up Stacks and Bundles
- 3-Across by 4-Up capability
- Smart-Stak Order Entry System
- Integrated Compensator Controls
- Pozi-Stack System II front end system with, Access-style backstop
- EZ-Adjust Cross Rail, with relocated fixed cross rail, for greater access to hopper
- Thin-style Dividers
- In-Sync Style Tampers
- Air Nozzle Cushion system
- Round/Link belting
- Deck Lock-out (DL-O) system
- Proportional Hydraulic Unit
- Inverted accumulator system with positive extension
- Patented LCS safety system with 'System Indicators & Fault Detection'
- IES, MSK and ZES controls conveniently located on operator workstation
- Extended nip layboy arms for positive sheet separation
- Dual direction vibrator bar with scrap deflector, brush, and scrap pan
- Layboy blower system with "on-the-run" quick adjust nozzle
- 5" wide fixed deck belts with close centers
- Electrically positioned, spring-loaded, Carriage-style Snubbing Wheels
- Deck-mounted Carriage Wheels with 'gang' nip adjust and lift
- Batch Building for individual or nicked bundles
- Soft-Stop System – Detects bottom limit for Pallets/Dunnage sheets
- EZ-Set layboy positioning

ENGINEERED TO GROW WITH YOUR BUSINESS

If one size fit all, business would be easy. However, that's not realistic. That's why Martin offers an expansive range of production enhancing optional features which allow you to customize your Select Stacker to exactly meet your specific production needs.

Designed to accept all Martin field upgrades and conversions, your stacker can be easily and economically transformed to meet your changing demands, and maintain productivity and safety.



Select-Options:

- 4-Out layboy
- ZFI – Zero Feed Interrupt
- 5" wide vacuum belts
- Fas-Set® Automatic Layboy Setup System (35 sec. setup)
- High Velocity (HV) blowers directs scrap to drive side via multiple nozzles
- Full width layboy scrap conveyor
- 66" transfer deck with 5" belts
- Bundle Takeaway conveyor
- BTS/BOS for nicked bundle breakers
- Pozi-Link, Mesh Style floor conveyor
- PFC/Scissor Lift
- Insertor™ Pallet/bottom sheet inserter



Additional options

- High Boardline, 42"– 48"
- UL508 Labeling
- Recommended spare parts

Special Order Options

- Side-by-Side stack builder kit
- Special devices for irregular shapes
- Flex Dividers – for odd or intricate die-cuts

DESIGNED FOR SAFETY AND CONVENIENCE

Designed for safety and engineered for maximum performance, Geo. Martin stackers provide unique safety features that protect without impeding operator efficiency. Ergonomic design, clear sight-lines, conveniently located controls with multiple stop control locations,

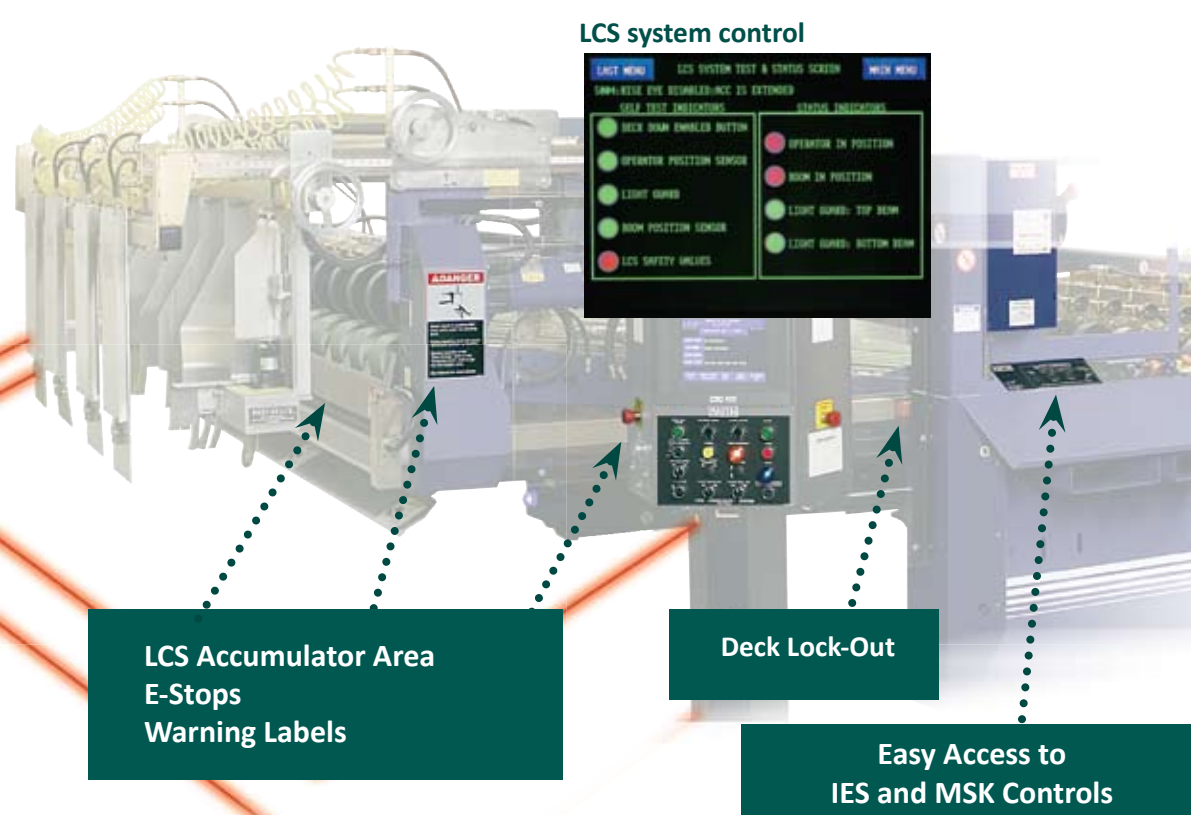
hazard warning labels and our patented LCS Safety System are integrated into the stacker design, allowing the operator to focus on high speed production and ease of use.

LCS

The LCS protects crews as they work around the stacker front end. A non-obtrusive fence of light beams surrounds the accumulator and stack areas. If a beam is broken, the accumulator is de-energized and the stacking deck is prevented from automatically descending while the stacker continues to accept sheets and rise. System control and troubleshooting is easy using the intuitive control screens incorporated into the operator's control panel. The LCS system is available in standard, synchronous and auto-muting configurations to meet your specific installation requirements.

Additional Standard Safety features

- High visibility warning labels
- Conveniently located controls
- Easy access to IES and MSK controls
- One-on-One training and full Safety documentation
- Deck Lock-Out (DL-O) allows the deck to be locked in a raised position for service and maintenance



The Smart-Stak – Order Entry System provides the stacker operator with convenient access to all information and controls needed to quickly and precisely set up any stacking job. The user friendly programming and color touch screen make it easy for an operator to set up and make adjustments to new jobs, or jobs that have been recalled from memory. Smart-Stak can store job parameters including all machine settings, timers, and counters for future use. Smart-Stak memory allows for storage of up to 10,000 individual jobs. The unit's thermal printer allows the operator to print out arm positions for quick reference during layboy set up.



NEW FROM GEO. MARTIN

EZ-Set Layboy – Faster, easier and more consistent set up

- Free-floating Layboy arms are quickly and easily positioned from behind the press at ground level
- Fully automatic nip open for faster positioning
- Dual arm air bladder assemblies (2 top and 2 bottom) positively lock arms in their set positions

Pozi-Stack II with In-Sync Style Tampers

- Eliminates sheet hang up
- Synchronous tamping action delivers neat, square stacks and bundles
- Includes tracking, variable drive system that adjusts tamping action to stacker speed

Pozi-Level System – Preserves bundle integrity

- Ensures a consistently level bundle drop onto conveyor, regardless of accumulator extension distance, to produce consistently neat and square bundles at all rated press speeds
- Total automatic set up, no operator intervention necessary
- Reduces accumulator rack wear and stacker maintenance

Some images may depict optional features

